



David Daniels, COHC, CEO  
400 West Lawndale Drive, Salt Lake City,  
Utah 84115  
Telephone: (801) 746-2462  
Email: [dave@thesafetyconsortium.com](mailto:dave@thesafetyconsortium.com)  
August 2022

Watching your supervisor freak out  
over something that you mentioned  
would be a problem months ago



**The Safety Consortium** was founded in 1955 to serve the safety needs of construction and mining businesses. We offer our courses monthly to facilitate people being able to receive training, testing, and certification in a timely manner. We are proud to have worked with many of the top mining and construction companies, providing their people with quality training.

The Safety Consortium is your best bet for MSHA and OSHA Training. We offer: Forklift Certification, UDOT Flagger Certification, Working at Elevations, Basic First Aid Certification, OSHA 10 & 30 Hrs for Construction, OSHA, Respirator Fit Testing, Occupational Audiometric Testing, Hearing Conservation Programs, MSHA New Miner (NEIM), MSHA 8hr Annual Refresher, Confined Space, Rigging & Signaling, etc.

## Upcoming Classes

**August 1-3, 2022**

**August 15-17, 2022**

All classes begin at 8:00 AM at The Safety Consortium. We are located at 400 W. Lawndale Drive in South Salt Lake. Dave has been teaching the 8-hr Annual Refresher all three days of open enrollment in efforts to keep class sizes smaller.

First Aid/CPR/AED is taught on the last day of open enrollment; usually Wednesday mornings. Call us or go online to register today!

**THEM:** How did you get  
all that work  
done so fast?

**ME:** Mostly OSHA  
violations.

99MEMES.CO

**Information about classes, and more, online at:**  
**[www.thesafetyconsortium.com](http://www.thesafetyconsortium.com)**



## The Safety Consortium – Facility Rental

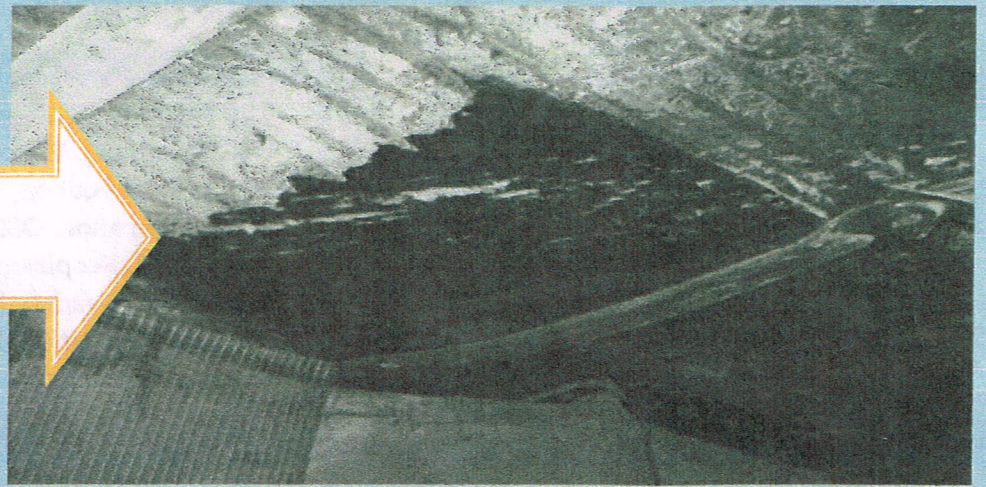
The Safety Consortium Facility is available when classes are not in session! We have a conference room, two large training rooms, a large parking area and restrooms. Inside there is hardware, software, tables, chairs, and anything else you need for presentation events.

For more information and pricing, please contact Dave at (801) 746-2462 or [dave@thesafetyconsortium.com](mailto:dave@thesafetyconsortium.com)



### MSHA Roof & Rib

From January 2017 to August 2021, the coal mining industry experienced 1,967 roof and rib accidents.



### Roof & Rib Safety - Best Practices:

- Conduct thorough pre-shift and on-shift examinations of the roof, face, and ribs and conduct examinations thereafter as conditions warrant.
- Be alert for changing conditions and report abnormal roof or rib conditions to mine management and other miners.
- Rib support may be necessary when the mining height increases, when rock partings are present in the rib, or when encountering deeper cover.
- Install rib bolts with adequate surface area coverage during the mining cycle and in a consistent pattern for the best protection against rib falls.
- The approved roof control plan contains minimum requirements – know and follow the plan, provide additional support when and where needed.
- Adequately support or scale any loose roof or rib material from a safe location, use a bar of suitable length and design when scaling.
- While roof bolting, ensure that ATRS systems are maintained in good working condition and firmly placed against the mine roof.
- Utilize skin control products such as straps, wire mesh, pizza pans etc. to help control rock falls between bolts.
- When working near the longwall face, support the exposed roof and face by mechanical means in the immediate work area.