



David Daniels COHC, CEO  
 400 W. Lawndale Dr.  
 Salt Lake City, UT 84115  
 Phone: (801) 746-2462  
 Email:  
[Dave@thesafetyconsortium.com](mailto:Dave@thesafetyconsortium.com)

July 2022 / Vol. 7

The Safety Consortium was founded in 1995 to serve the safety needs of construction and mining businesses. We offer our courses monthly to facilitate people being able to receive training, testing, and certification in a timely manner. We are proud to have worked with many of the top mining and construction companies, providing their people with quality training.

The Safety Consortium is your best bet for MSHA and OSHA Training. We offer: Forklift Certification, UDOT Flagger Certification, Working at Elevations, Basic First Aid Certification, OSHA 10 & 30hr for Construction, OSHA, Respirator Fit Testing, Occupational Audiometric Testing, Hearing Conservation Programs, Trenching & Excavation, HAZWOPER 8hr, HAZWOPER 24, HAZWOPER 40, MSHA New Miner (NEIM), MSHA 8hr Annual Refresher, Confined Space, Rigging & Signaling, and more.

### The Safety Consortium – Facility Rental

The Safety Consortium is available when classes are not in session! We have a conference room, two large training rooms, a large parking area and restrooms. Inside there is hardware, software, tables, chairs, and anything else you need for presentation events.

For more information and pricing, please contact Dave at (801) 746-2462 or [dave@thesafetyconsortium.com](mailto:dave@thesafetyconsortium.com)

### Upcoming Classes

(Annual Refresher, New Miner, First Aid Certification)

July 5-7, 2022

July 18-20, 2022

August 1-3, 2022

August 15-17, 2022

All classes begin at 8:00AM at The Safety Consortium. We are located at 400 W. Lawndale Drive in South Salt Lake. Dave has been teaching the 8-hr Annual Refresher all three days of open enrollment in efforts to keep class sizes smaller. First Aid/CPR/AED is taught on the last day of open enrollment; usually Wednesday mornings. Call us or go online to register today!



## Check Out Our Website!

Register for in-person or MSHA-Approved online training at <https://thesafetyconsortium.com/>

We have partnered with BIS Safety and Consulting to provide a comprehensive suite of online training options, including OSHA 10 & 30, Hazmat, and Flagger. All levels of courses from Beginners to Supervisors. These courses are available on our website: check out our homepage for online training information!



## MSHA - Powered Haulage Safety

So far this year, nine miners have been killed and 185 have been injured in accidents involving powered haulage equipment such as shuttle cars, scoops, locomotives, front end loaders and more. Year to date, this is the highest number of powered haulage fatalities since 2006. The safety of mining's most precious resource – the miner – is a critical mission at the Mine Safety and Health Administration. That's why we are hosting a national Stand Down for Safety Day on July 20 focused on powered haulage and vehicle rollovers to help educate miners, save lives, and prevent injuries. On July 20, all levels of MSHA enforcement staff will visit mines to meet with miners and operators to emphasize the need for adhering to best safety practices for powered haulage, vehicle rollovers, and miner training to reduce fatalities and injuries.

MSHA has also developed guidance intended to help miners, mine operators, and contractors prevent accidents caused by working with, on, or near powered haulage equipment. The guidance contains best practices, links to videos and training resources, including other additional materials.



*"The U.S. Department of Labor's Mine Safety and Health Administration (MSHA) works to prevent death, illness, and injury from mining and promote safe and healthful workplaces for U.S. miners."*

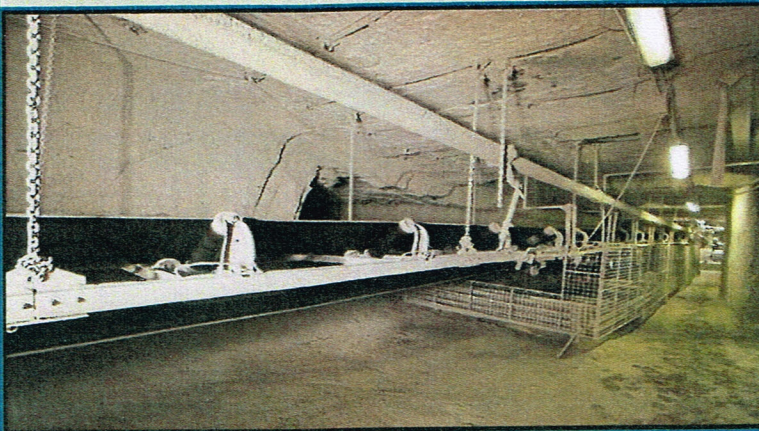
For more information visit [www.MSHA.gov](http://www.MSHA.gov)

## Safety Topic: Conveyor Systems

Conveyor systems are an important method of material haulage at many surface and underground mines. They range from a single belt to a series of belts spanning miles.

All conveyor systems have inherent dangers while in motion. Fatal accidents related to working near, inspecting, adjusting, or maintaining conveyor belts occur each year at underground and surface mines.

The risk to workers can be reduced by following safe work practices during operation and maintenance and by installing proper physical safeguards on the equipment. On this page, MSHA provides resources and tips to help miners stay safe around conveyor systems.



## Key Safety Practices:

- Ensure that power is disconnected during maintenance and repairs by locking out and tagging out energy at the source. It's best if the person doing the work personally disconnects and locks the power and restores it following the work.
- Ensure that adequate guarding is installed to prevent any contact between miners and moving parts of a conveyor, including rollers and head and tail areas.
- Install pull cords for emergency stops at strategic locations to prevent or minimize injury after accidental contact.
- Never attempt to cross a moving conveyor belt except at suitable crossings.
- Install practical and usable belt crossing facilities at strategic locations, including near controls, when height allows.
- Install audible and visible warning systems to signal the start of the conveyor.
- Establish policies and procedures for performing specific tasks on conveyor belts and ensure all miners are trained.

Information about classes, and more, online at: [www.thesafetyconsortium.com](http://www.thesafetyconsortium.com)