



David Daniels, COHC, CEO  
400 West Lawndale Drive, Salt Lake City, Utah 84111  
Telephone: (801) 746-2462  
Email: [Dave@thesafetyconsortium.com](mailto:Dave@thesafetyconsortium.com)  
March 2022, Vol. 4



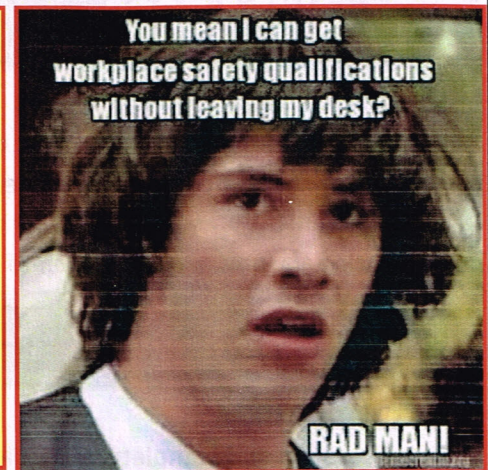
**The Safety Consortium** was founded in 1995 to serve the safety needs of construction and mining businesses. We offer our courses on a monthly basis to facilitate people being able to receive training, testing and certification in a timely manner. We are proud to have worked with many of the top mining and construction companies, providing their people with quality training.

The Safety Consortium is your best bet for MSHA and OSHA Training. We offer: Forklift Certification, UDOT Flagger Certification, Working at Elevations, Basic First Aid Certification, OSHA 10 & 30hrs for Construction, OSHA, Respirator Fit testing, Occupational Audiometric Testing, Hearing Conservation Programs, Trenching & Excavation, HAZWOPER 8hr, HAZWOPER 24, HAZWOPER 40, MSHA New Miner (NEIM), MSHA 8hr Annual Refresher, Confined Space, Rigging & Signaling, etc.

### Check out our website!

Register for in-person or MSHA-Approved online training at  
<https://thesafetyconsortium.com/>

We have partnered with BIS Safety and Consulting to provide a comprehensive suite of online training options, including OSHA 10 & 30, Hazmat and Flagger. All levels of courses from Beginners to Supervisors. These courses are available on our website: check out our homepage for online training information!



### Upcoming 2022 MSHA Open Enrollment Schedule: (Annual Refresher, New Miner, First Aid Certification)

All classes begin at 8:00AM at The Safety Consortium. We are located at 400 W. Lawndale Drive in South Salt Lake. Dave has been teaching the 8-hr Annual Refresher all three days of open enrollment in efforts to keep class sizes smaller. First Aid/CPR/AED is taught on the last day of open enrollment; usually Wednesday mornings. Call us or go online to register today!

**March 7-9, 2022**

**March 21-23, 2022**

**April 4-6, 2022**

**April 18-20, 2022**

**Information about classes, and more, online at: [www.thesafetyconsortium.com](http://www.thesafetyconsortium.com)**





David Daniels, COHC, CEO  
 400 W. Lawndale Drive, Salt Lake City, UT 84115  
 Telephone: (801) 746-2462  
 Email: [Dave@thesafetyconsortium.com](mailto:Dave@thesafetyconsortium.com)

## The Safety Consortium – Facility Rental

The Safety Consortium facility is available when classes are not in session! We have a conference room, two large training rooms, a large parking area and restrooms. Inside there is hardware, software, tables, chairs, and anything else you need for presentation events.

For more information and pricing, please contact Dave at 801-746-2462 or [dave@thesafetyconsortium.com](mailto:dave@thesafetyconsortium.com)



## Lockout - Tagout - Tryout Procedures

Since 2005, 28 metal and nonmetal miners have died in electrical and machinery accidents in which power was not disconnected and locked out before work was begun on power circuits or equipment.

(LOTO) ensure that all energy sources are isolated before electrical or mechanical work is performed. LOTO protects miners from the dangers of uncontrolled, unplanned release of energy (movement of equipment or materials; electrical, hydraulic or pneumatic), or toxic materials.

**MSHA's LOTO standards address electrical and mechanical hazards.**

### Electrical lockout

- 30 CFR §§56/57.12006 - Distribution boxes
- 30 CFR §§56/57.12016 - Work on electrically powered equipment
- 30 CFR §§56/57.12017 - Work on power circuits

### Mechanical lockout

- 30 CFR §§56/57.14105 - Procedures during repairs or maintenance

## Use Lock - Tag - Try whenever:

- Removing or bypassing a guard or other safety device for maintenance, repair, cleaning, or clearing jammed mechanisms.
- Placing any part of one's body where it could be injured by moving machinery parts or release of stored energy (hydraulic or pneumatic pressure, steam, springs, objects that could fall or pivot), or
- Placing any part of one's body into an electrical energy or hazardous substances danger zone.

## Workplace Examinations

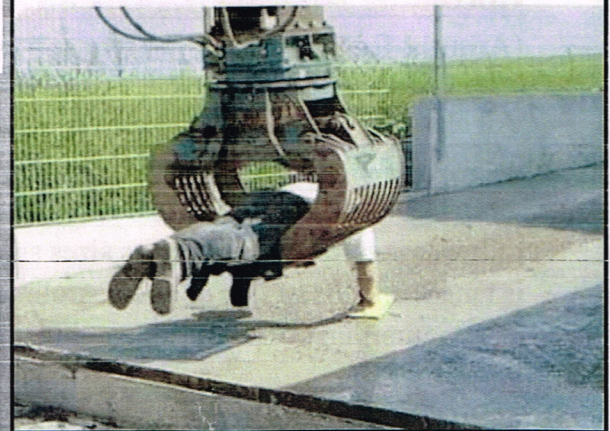
### 30 CFR 56.18002

- Thorough and complete Workplace Examinations are a **requirement** and an invaluable tool to assure a safe and healthy workplace. Mine operators should diligently review the records of Workplace Examinations to ensure that hazards are being noted and that hazards are being corrected in a timely manner.

The purpose of Workplace Examinations is to identify hazardous conditions and eliminate, mitigate or correct hazardous conditions in a timely manner.

30 CFR Part 56/57/18002 is a requirement, not a choice. The only choice is how complete and thorough an examination is done and how diligent the mine operator is correcting hazardous conditions. Examinations should be conducted prior to commencing work duties to assure miners will not be exposed to hazardous conditions.

OSHA Inspector: (leaves)  
 5 minutes later:



Register for classes online at [www.thesafetyconsortium.com](http://www.thesafetyconsortium.com)